

The ASCO Service Entrance Power Transfer Switch combines automatic power switching with the disconnecting, grounding, and bonding required for use as service entrance equipment. It meets all National Electrical Code® requirements for service entrance use.



ASCO SERIES 300
SE Rated 800 amperes Type 1 enclosure



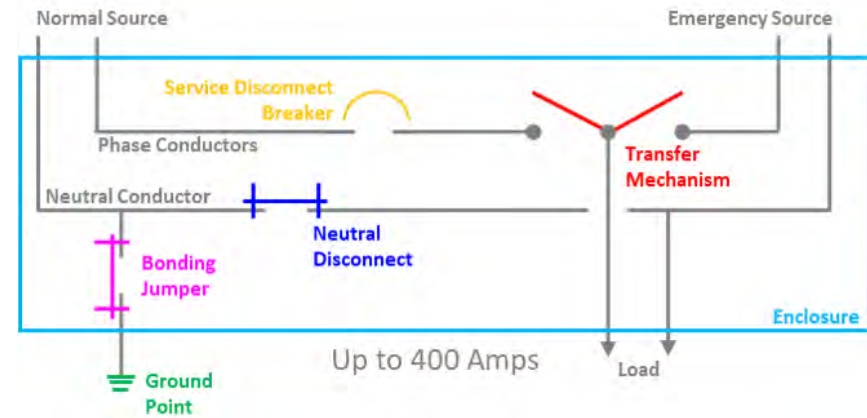
ASCO SERIES 300
SE Rated 200 amperes in Type 3R enclosure

Product Features:

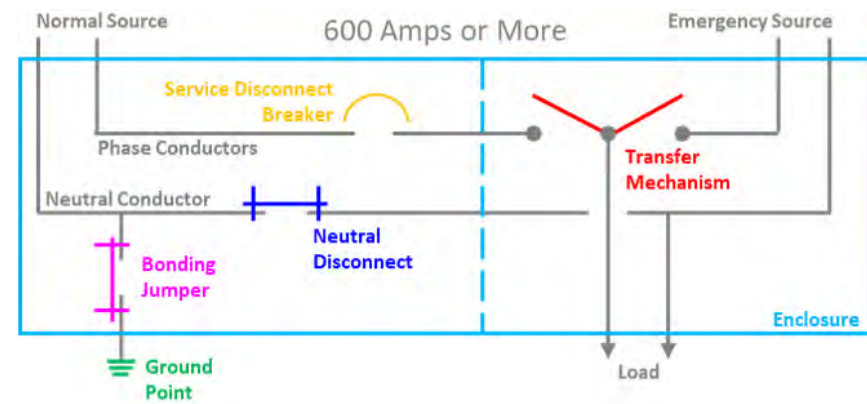
- Sizes available from 70 - 3000 amps, 600 VAC, 50 or 60 Hz, single or 3-phase
- 70 - 400 Ampere listed to UL 1008
- 600 - 3000 Ampere listed to UL 891
- Automatic Transfer Switch is listed to UL 1008 for total system loads
- Silver plated copper ground and neutral bus with solderless screw type terminals
- Ground fault trip protection provided on 1000 amps and above
- Available with solid or switched neutral
- Line side breaker barriers available in compliance with NEC2020

Construction

Products 400 amperes or less, utilize a single enclosure, including a service disconnect circuit breaker, as well as the transfer switch and grounding and bonding provisions.



Products 600 amperes and above provide a service equipment section containing the service disconnect circuit breaker as well as grounding and bonding provisions. A second section contains the power transfer switch.



For additional detail, see the [interactive 3-D view](#) in the [ASCO Digital Hub](#).

Order Information

To order an ASCO SERIES 300SE Power Transfer Switch, complete the following catalog number:

J	+	03AUS	+	B	+	3	+	0600	+	N	+	GX	+	C
Frame		Product Type		Neutral Code		Phase Poles		Amperes Continuous Rating		Voltage Code		Controller Code		Enclosure
D = 70 - 225 Amp		03AUS = Automatic		A = Solid Neutral		2		0070, 0100, 0150, 0200,		C = 208 D = 220 E = 230 F = 240 H = 380 J = 400 K = 415 L = 440 M = 460 N = 480 P = 550 Q = 575 R = 600		G = No Optional Accessories GX = Optional Accessories		C = Type 1 (Standard) M = Type 3R Secure Double Door N = Type 4 ¹ Secure Double Door Q = Type 12 ¹ Secure Double Door V = Type 4X ^{4,5} Secure Double Door 316 SS
J = 150 - 600 Amp 150A - 225A: 3ADUS/3NDUS Only		03NUS = Non-Automatic		B = Switched Neutral		3		0225 ³ , 0250 ³ , 0400, 0600, 0800, 1000, 1200, 1600, 2000 2500, 3000						
H = 800 - 1200 Amp		3ADUS = Automatic Delayed Transition												
G = 1600 - 3000 Amp		3NDUS = Non-Automatic, Delayed Transition												

Notes:
 1. Available for 70-1600 amperes, use type 3R for 2000-3000 ampere applications.
 2. A solid neutral is provided as standard.
 3. 200, 225 ampere rated switches suitable for use with copper cable only. Refer to paragraph 310.15 of the NEC for additional information.

4. Type 316 stainless steel is the standard. It provides an improved reduction in corrosion of salt and some chemicals. It is the preferred choice for marine environments.
 5. Available only on switches rated 70 - 1600 amperes.

Specifications

ASCO SERIES 300SE Power Transfer Switch Dimensions and Shipping Weights

UL Type 1 Enclosure⁴

Switch Rating Amps	Phase Poles	Neutral Code	Dimensions, In. (mm)			Approx. Shipping Weight Lb. (kg)
			Width	Height	Depth	
70, 100, 150, 200, 225	2	A	36 (914)	48 (1219)	13 (330)	400 (185)
	2	B	36 (914)	48 (1219)	13 (330)	410 (189)
	3	A	36 (914)	48 (1219)	13 (330)	410 (189)
150, 200, 225, SERIES 3ADUS/3NDUS Only	2	A	36 (914)	48 (1219)	13 (330)	400 (185)
	2	B	36 (914)	48 (1219)	13 (330)	408 (188)
	3	A	36 (914)	48 (1219)	13 (330)	408 (188)
2501, 4001	2	A	42 (1067)	48 (1219)	15.5 (394)	420 (193)
	2	B	42 (1067)	48 (1219)	15.5 (394)	430 (198)
	3	A	42 (1067)	48 (1219)	15.5 (394)	430 (198)
6001	2	A	38 (965)	91 (2311)	28 (711)	860 (396)
	2	B	38 (965)	91 (2311)	28 (711)	870 (401)
	3	A	38 (965)	91 (2311)	28 (711)	870 (401)
8001	2	A	38 (965)	91 (2311)	28 (711)	1460 (673)
	2	B	38 (965)	91 (2311)	28 (711)	1470 (677)
	3	A	38 (965)	91 (2311)	28 (711)	1470 (677)
10001, 12001	2	A	38 (965)	91 (2311)	28 (711)	1480 (682)
	2	B	38 (965)	91 (2311)	28 (711)	1470 (677)
	3	A	38 (965)	91 (2311)	28 (711)	1470 (677)
16001, 20001	2	A	38 (965)	91 (2311)	28 (711)	1680 (773)
	2	B	38 (965)	91 (2311)	28 (711)	1680 (773)
	3	A	38 (965)	91 (2311)	28 (711)	1680 (773)
25001, 30001	2	A	38 (965)	91 (2311)	28 (711)	4590 (2111)
	2	B	38 (965)	91 (2311)	28 (711)	4690 (2157)
	3	A	38 (965)	91 (2311)	28 (711)	4690 (2157)

Notes:
 1. Unit is designed for top and bottom cable entry for all services and load.
 2. Enclosures for 600 - 3000 amps are freestanding.
 3. A space heater accessory 44G is required with all service entrance (Type 3R) switches to help reduce condensation and protect the circuit breaker. It is recommended when environmental enclosures (Type 4, 12) are ordered for installation outdoors. See Optional Accessories page for space heater options (acc. 44G).
 4. Dimensional data is approximate and subject to change. Certified dimensions available upon request.

SERIES 300SE External Power Connections Sizes UL-Listed Solderless Screw-Type Terminals

Switch Rating	Ranges of AL-CU Wire Sizes
70, 100, 150, 200 ² , 225 ²	One #14 to 4/0 AWG
150 ³ , 200 ³ , 225 ³ , 250, 400	One #4 AWG to 600 MCM Two 1/0 to 250 MCM
600	Two 1/0 to 600 MCM
800, 1000, 1200	Four 1/0 to 600 MCM
1600, 2000	Six 1/0 to 600 MCM
2500	Twelve 3/0 to 750 MCM
3000	Twelve 3/0 to 750 MCM

Notes:
 1. All SERIES 300 switches default to a solid neutral assembly unless a switched neutral is specified. If no neutral is required, order as solid neutral and left unwired.
 2. 200 and 225 ampere rated switches for use with copper cable only. Refer to paragraph 310.15 of the NEC for all additional information.
 3. J 150-225 ampere for SERIES 3ADUS/3NDUS only.
 4. Use wire rated 75 degrees minimum for all power connections.
 5. Refer to the outline drawing for maximum power cable connections for circuit breaker.

UL Type 3R Enclosure⁴

Switch Rating Amps	Phase Poles	Neutral Code	Dimensions, In. (mm)			Approx. Shipping Weight Lb. (kg)
			Width	Height	Depth	
70, 100, 150, 200, 225	2	A	36 (914)	48 (1219)	16 (406)	500 (232)
	2	B	36 (914)	48 (1219)	16 (406)	520 (241)
	3	A	36 (914)	48 (1219)	16 (406)	520 (241)
150, 200, 225, SERIES 3ADUS/3NDUS Only	2	A	41 (1041)	95.5 (2424)	33 (838)	500 (232)
	2	B	41 (1041)	95.5 (2424)	33 (838)	520 (241)
	3	A	41 (1041)	95.5 (2424)	33 (838)	520 (241)
2501, 4001	2	A	42 (1067)	48 (1219)	18 (487)	500 (232)
	2	B	42 (1067)	48 (1219)	18 (487)	520 (241)
	3	A	42 (1067)	48 (1219)	18 (487)	520 (241)
6001	2	A	41 (1041)	95.5 (2425)	33 (838)	1200 (555)
	2	B	41 (1041)	95.5 (2425)	33 (838)	1220 (564)
	3	A	41 (1041)	95.5 (2425)	33 (838)	1220 (564)
8001	2	A	38 (965)	91 (2311)	28 (711)	1520 (703)
	2	B	38 (965)	91 (2311)	28 (711)	1540 (712)
	3	A	38 (965)	91 (2311)	28 (711)	1540 (712)
10001, 12001	2	A	38 (965)	91 (2311)	28 (711)	1580 (731)
	2	B	38 (965)	91 (2311)	28 (711)	1540 (712)
	3	A	38 (965)	91 (2311)	28 (711)	1540 (712)
16001, 20001	2	A	38 (965)	91 (2311)	28 (711)	2200 (1018)
	2	B	38 (965)	91 (2311)	28 (711)	2240 (1036)
	3	A	38 (965)	91 (2311)	28 (711)	2240 (1036)
25001, 30001	2	A	38 (965)	91 (2311)	28 (711)	5280 (2479)
	2	B	38 (965)	91 (2311)	28 (711)	5380 (2475)
	3	A	38 (965)	91 (2311)	28 (711)	5380 (2475)

Extended Warranties for SERIES 300SE Transfer Switches (3AUS/3NUS/3ADUS/3NDUS)

Description
1 Year Extension (Total of 3 Years)
2 Year Extension (Total of 4 Years)
3 Year Extension (Total of 5 Years)

Notes:
 1. Standard warranty is (24) months, 2 years from date of shipment, extended warranty is in addition to the two years, for a total of 3, 4 or 5 years, except where the warranty period for the circuit breaker shall be limited to 24 months from date of shipment from ASCO.
 2. Refer to Publication 3223 for warranty terms and conditions.

SERIES 300SE AIC Breaker Rating¹

Switch Rating	AIC Rating (kA)	Voltage
70, 100, 150, 200, 225	85	480
150, 200, 225 SERIES 3ADUS/3NDUS Only	85	480
250, 400, 600	85	480
800	65	480
1000, 1200	50	480
1600, 2000	65	480
2500, 3000	100	480